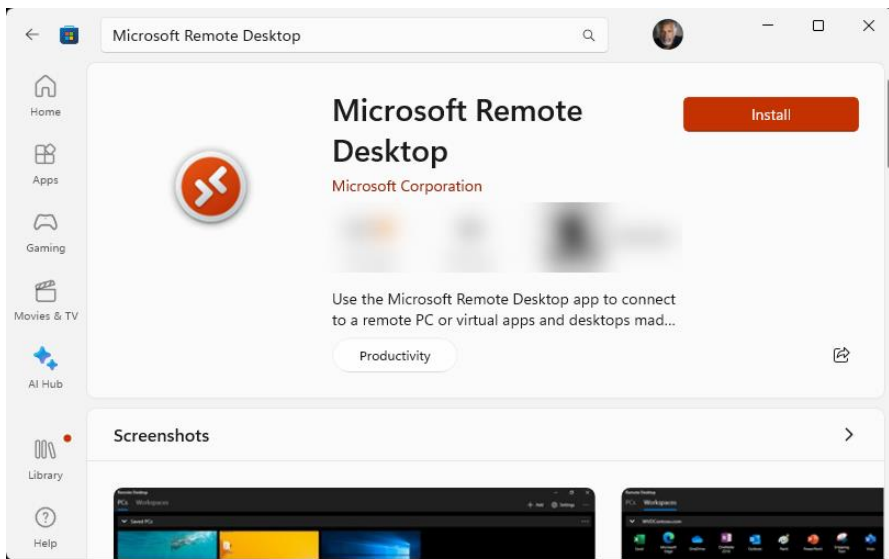





Go to the App Store and download “Microsoft Remote Desktop.”

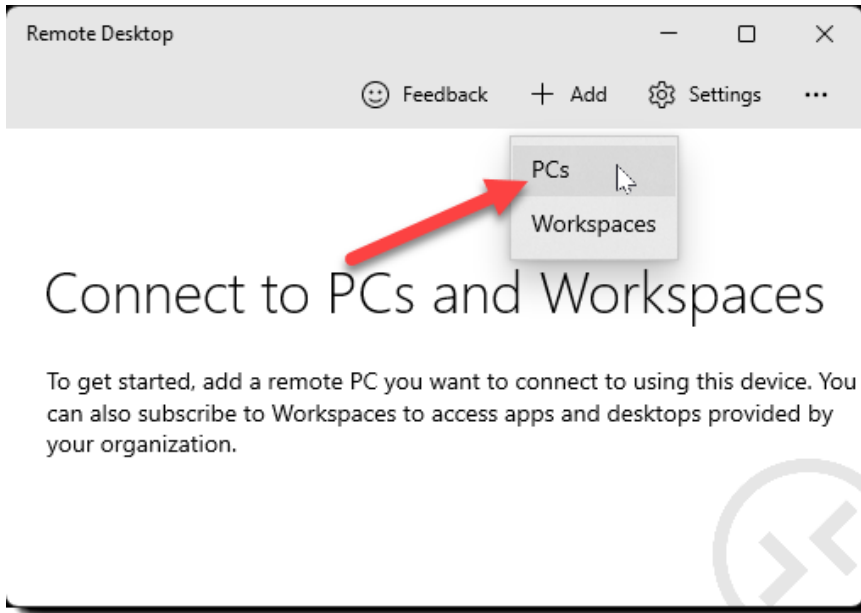


Here are step-by-step instructions on how to open the Microsoft App Store, search for the Microsoft Remote Desktop app, and then download and install it:

1. **Open the Microsoft Store App:** Press the 'Windows' key on your keyboard or click the 'Windows' icon located on the lower-left corner of your screen to bring up the start menu. Type 'Microsoft Store' in the search bar and select the Microsoft Store app from the list of search results.
2. **Search for Microsoft Remote Desktop:** once you have opened the Microsoft Store, you will see a search bar at the top-right corner of the screen. Click on it and type 'Microsoft Remote Desktop', then press 'Enter' or click the magnifying glass icon to begin your search.
3. **Select Microsoft Remote Desktop from the search results:**  
From the list of search results, find the 'Microsoft Remote Desktop' app. It should be the first result if you typed it correctly. Click on it to go to its store page.
4. **Download and install the app:**  
On the Microsoft Remote Desktop page, click on the 'Get' or 'Install' button to begin downloading and installing the app. You may need to sign in with your Microsoft account if you are not already signed in.
5. **Open the app:**  
After the app has been installed, you can open it right away by clicking 'Launch' in the Microsoft Store, or you can find it in your start menu by clicking the Windows icon and scrolling through the app list or typing 'Microsoft Remote Desktop' into the search bar. 

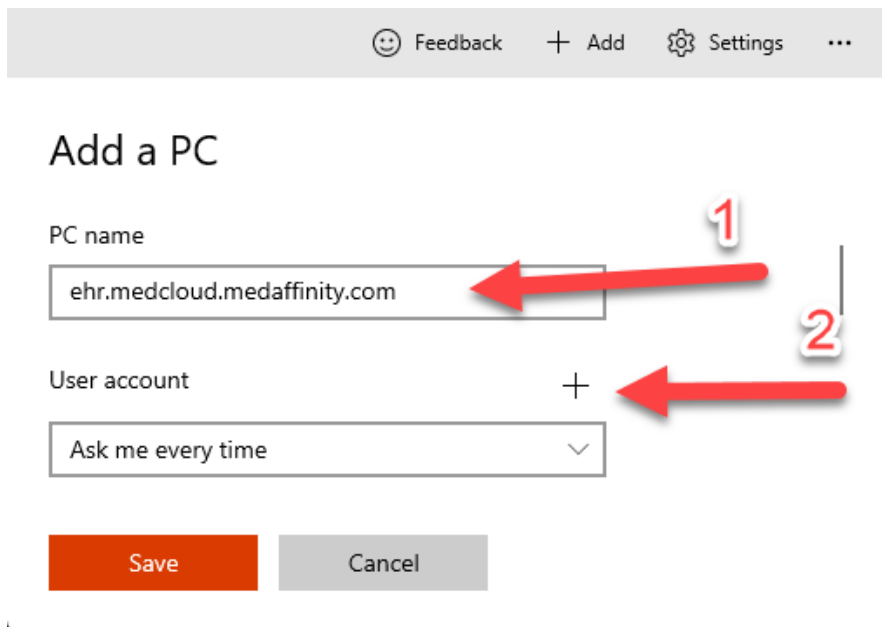
And that is it! You have successfully downloaded and installed Microsoft Remote Desktop from the Microsoft Store.

Once app is installed, open app and click “Add” and then Click PCs



Fill in the following information:

- PC Name (type: ehr.medcloud.medaffinity.com)
- Click the “+” Icon and enter in your user information provided to you by MedAffinity.



- Username: medcloud\YourMedAffinityUsername
- Password: YOUR MEDAFFINITY PASSWORD
- Display Name: (it can be whatever you want; I would use your name)

## Add an account

Username

medcloud\User.Demo



Password (Optional)

.....



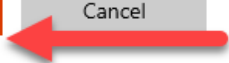
Display name (Optional)

MedAffinity EHR User Name



Save

Cancel



- Click Save
- Display Name: MedAffinity EHR
- Click Save

## Add a PC

PC name

ehr.medcloud.medaffinity.com

User account



MedAffinity EHR User Name



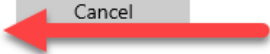
Display name (Optional)

MedAffinity EHR

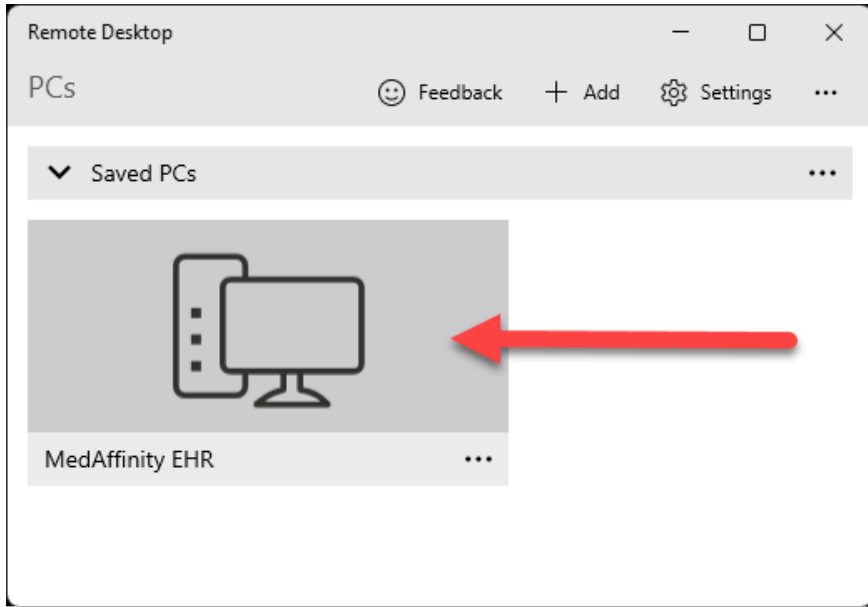


Save

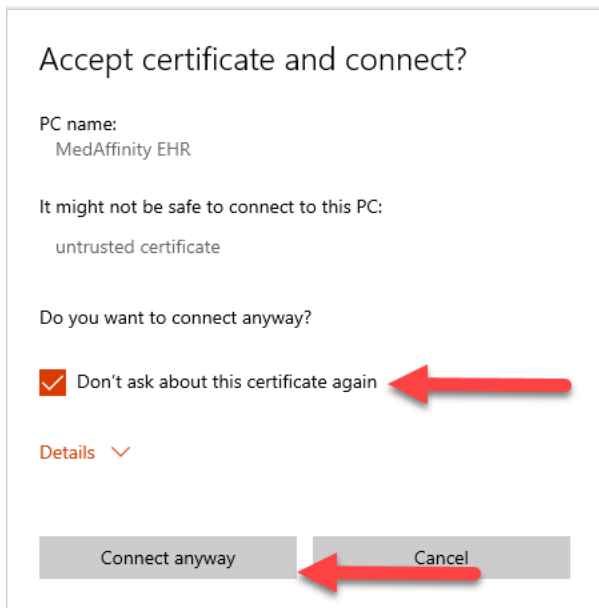
Cancel



You should now see a MedAffinity EHR Under Saved PCs.



Double click on Desktop that was added.



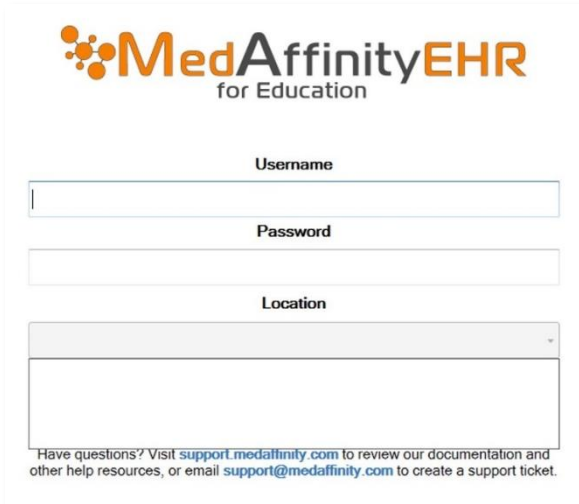
Check "Do not ask about this certificate again."

And Click "Connect anyway"

---

## LOGGING IN/SELECTING A LOCATION

- If your login information is not automatically filled out, type your MedAffinity username, password and select the location needing to be accessed.



The image shows the login interface for MedAffinity EHR for Education. At the top is the logo, which consists of a cluster of orange dots followed by the text "MedAffinityEHR" in orange and "for Education" in black below it. Below the logo are three input fields: "Username" (a text box), "Password" (a text box), and "Location" (a dropdown menu). At the bottom of the form, there is a small text link: "Have questions? Visit [support.medaffinity.com](http://support.medaffinity.com) to review our documentation and other help resources, or email [support@medaffinity.com](mailto:support@medaffinity.com) to create a support ticket."

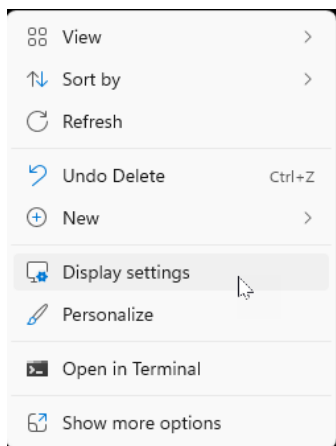
## IMPORTANT DISPLAY OPTIONS FOR HIGH RESOLUTION DISPLAYS

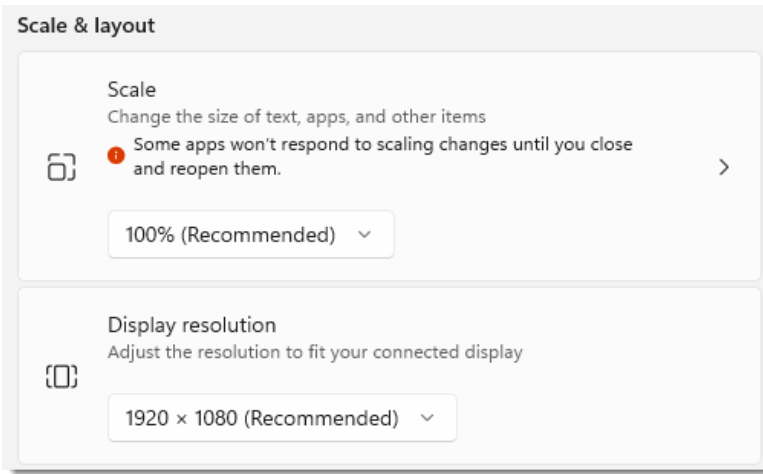
*Ensuring Optimal User Experience on MedAffinity EHR with high resolution displays.  
(For displays with resolution higher than 1920x1080)*

Text Here

---

## HOW DO I CHECK TO SEE WHAT DISPLAY RESOLUTION MY COMPUTER IS SET TO?





## EDITING MEDAFFINITY EHR DISPLAY SETTINGS

Using the Microsoft Remote Desktop client app from the Microsoft Store, you can adjust the resolution and scaling of the Remote Desktop session within the app settings. Here is how:

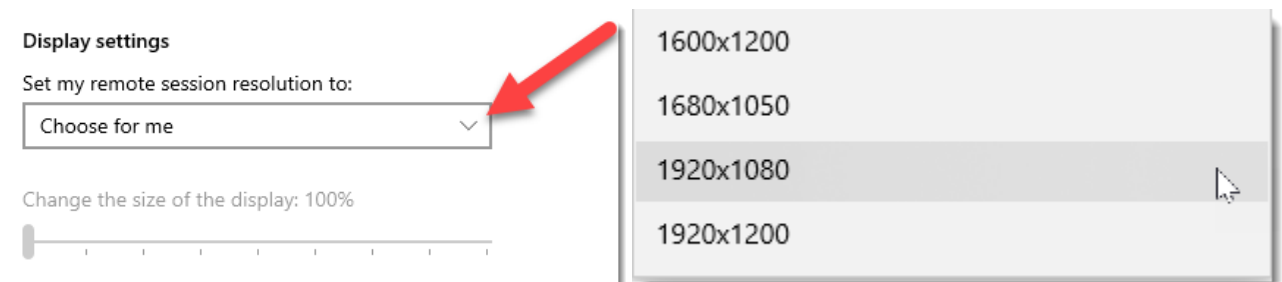
1. **Launch the Remote Desktop App:** Open the Microsoft Remote Desktop app.
2. **Configure a new desktop connection or edit an existing one:** In the app, you can add a new remote desktop connection by clicking on the '+' button and selecting 'Desktop', or you can edit an existing one "..."



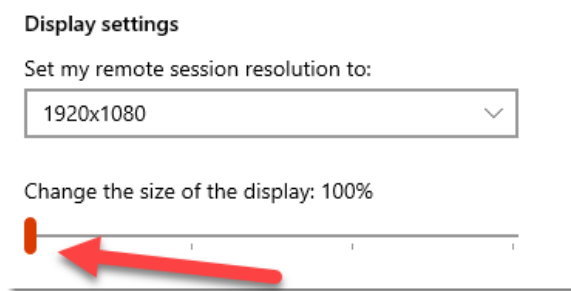
3. **Input the PC name:** Input the name of the PC you want to connect to (this can be a Windows computer name, an internet domain name, or an IP address), then select "Show more."



4. **Adjust Display settings:** Under the "Display" section, you can adjust the resolution by choosing a suitable one from the 'Resolution' drop-down list. This setting allows you to specify the size of the Remote Desktop window on your local screen.
  - You want the remote session to have a specific resolution, select one of the available options in the drop-down list.



5. **Set Display scale:** Adjust the 'Display scale' by choosing a suitable one from the 'Display scale' drop-down list. This setting determines the size of text, apps, and other items within the Remote Desktop window. You can choose from 100%, 125%, 150%, or 200%.



**Microsoft Remote Desktop (MRD) setting For Microsoft Surface Pro:**

1. 1920 x 1280 at 125% Scaling
2. 1440 x 960 at 100% Scaling

If choice (1) is a little too small, disconnect from the EHR Session and adjust the Display Settings to (2) wait a couple minutes and then log back in to see the difference.

6. **Save your changes:** Click "Save" to apply your changes.
7. **Connect to the Remote Desktop:** You can now connect to the Remote Desktop by clicking on the connection you have just configured. The new resolution and scaling settings should now be applied to this session.

Remember, the available resolution and scaling options can be limited by the capabilities of your local and remote devices. In some cases, you may need to try different settings to find the combination that works best for you.