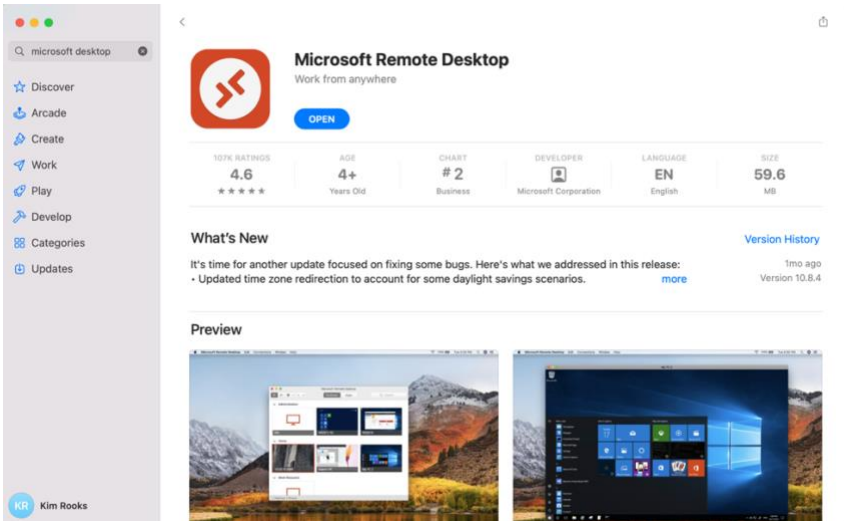


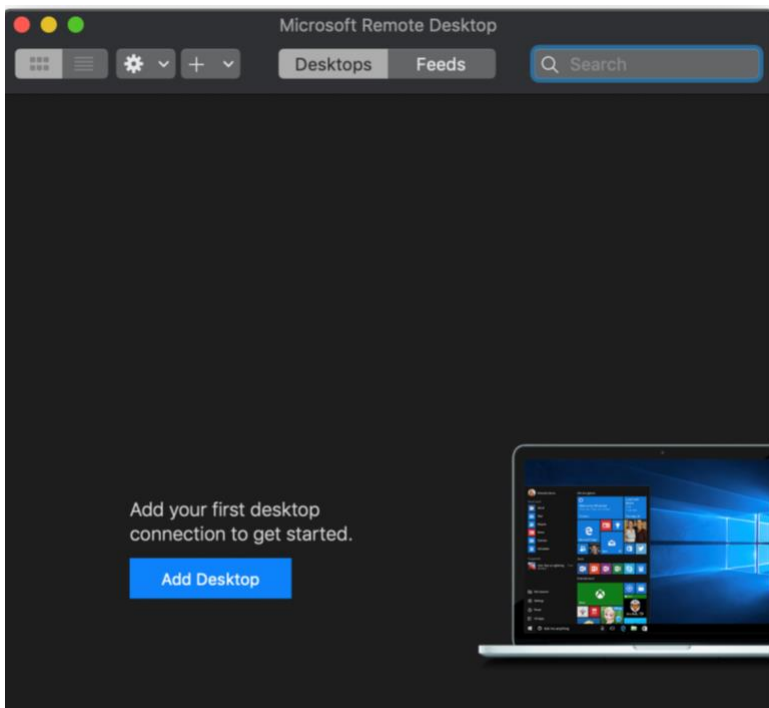
MEDAFFINITY EHR – HOW TO LOG IN

LOGGING IN-REMOTE DESKTOP CONNECTION FOR MAC USERS

Go to the App Store and download “Microsoft Remote Desktop”

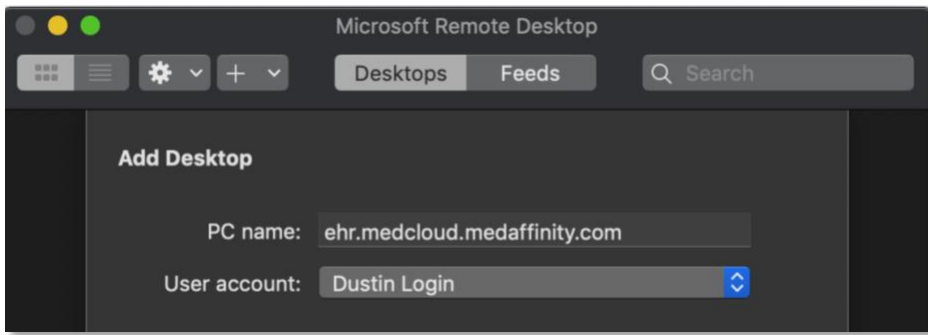


Once app is installed, open app and click “Add Desktop”

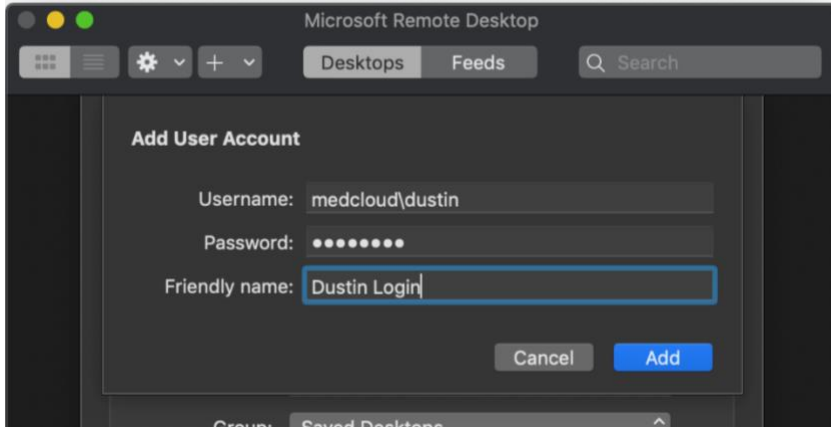


Fill in the following information:

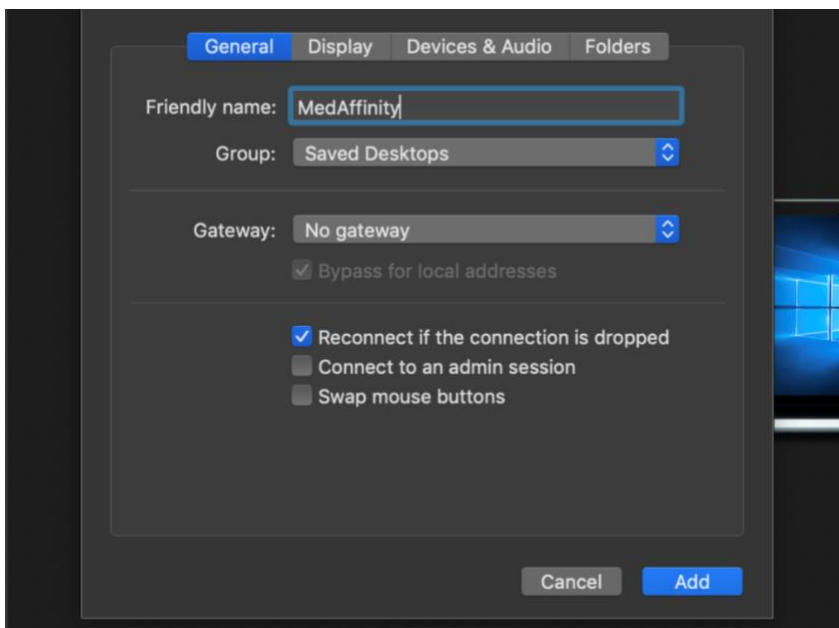
- PC Name (type: ehr.medcloud.medaffinity.com)
- Click drop down and click on "Add New Account"



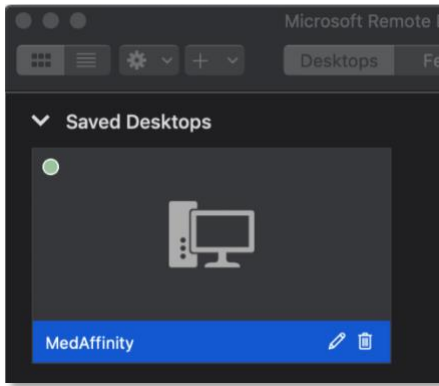
- Username: medcloud\YourMedAffinityUsername
- Password: YOUR MEDAFFINITY PASSWORD
- Friendly Name: (it can be whatever you want; I would use your name)
- Click Add



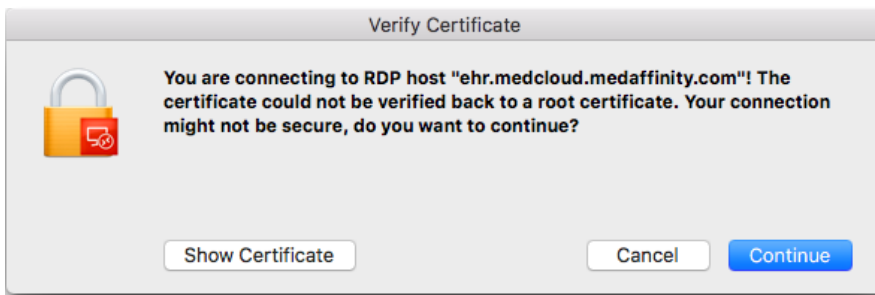
- Friendly Name: MedAffinity EHR
- Click Add



Double click on Desktop that was added



Click Continue



LOGGING IN/SELECTING A LOCATION

- If your login information isn't automatically filled out, type your MedAffinity username, password and select the location needing to be accessed.

A screenshot of the MedAffinity EHR for Education login page. The logo at the top left consists of orange dots forming a cluster next to the text 'MedAffinityEHR for Education'. Below the logo are three input fields: 'Username', 'Password', and 'Location'. The 'Location' field is a dropdown menu. At the bottom of the page, there is a footer with the text: 'Have questions? Visit support.medaffinity.com to review our documentation and other help resources, or email support@medaffinity.com to create a support ticket.'